



Paddington 28 Harris Street (off Elizabeth St)



4



2

parkside location

'Frampton' is a gorgeous early 1900's cottage situated in a unique quiet location bordering cosmopolitan Woollahra and overlooking Trumper Park bushland. Tastefully refurbished over two light filled levels, 'Frampton' boasts a northeasterly aspect embracing a sunny courtyard surrounded by an exotic sub tropical garden. A country sanctuary just minutes from everywhere.

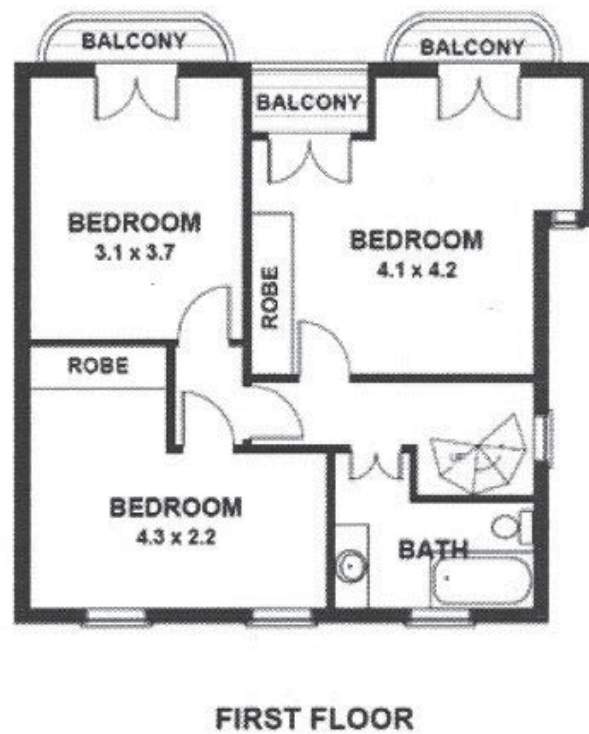
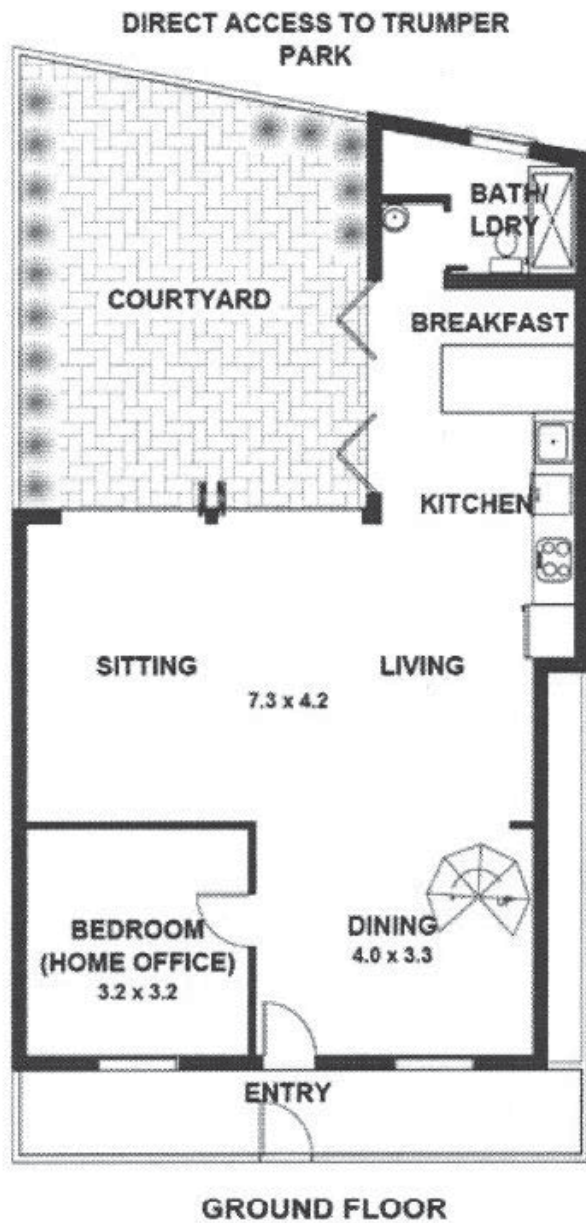
- Freestanding cottage with wide frontage
- Spacious open plan living area with bifold doors to courtyard & garden
- Updated kitchen with stainless steel & CaesarStone benches
- 3 large upstairs bedrooms, 2 with balconies overlooking park
- Home office/4th bedroom
- Modern family bathroom with bath
- 2nd bathroom with laundry features exposed sandstone walls
- Blackbutt flooring and high ceilings throughout
- Reverse cycle air conditioning
- Located at the end of a wide, quiet cul-de-sac with easy street parking
- Short walk to Edgecliff station, several of Sydney's top restaurants & Woollahra shops

auction: Thursday 4th December 2014
On-site at 6.00pm
(unless sold prior)

inspect: Saturday 10.00 - 10.45am
Thursday 5.00 - 5.45pm

details: Colm O'Sullivan
0418 614 322
colm@suttonplacerealty.com.au

SUTTON PLACE
REALTY



‘Frampton’ 28 Harris Street, Paddington

We have obtained all information in this document from sources we believe to be reliable; however, we cannot guarantee its accuracy. Prospective purchasers are advised to carry out their own investigations.



bespoke property consultants